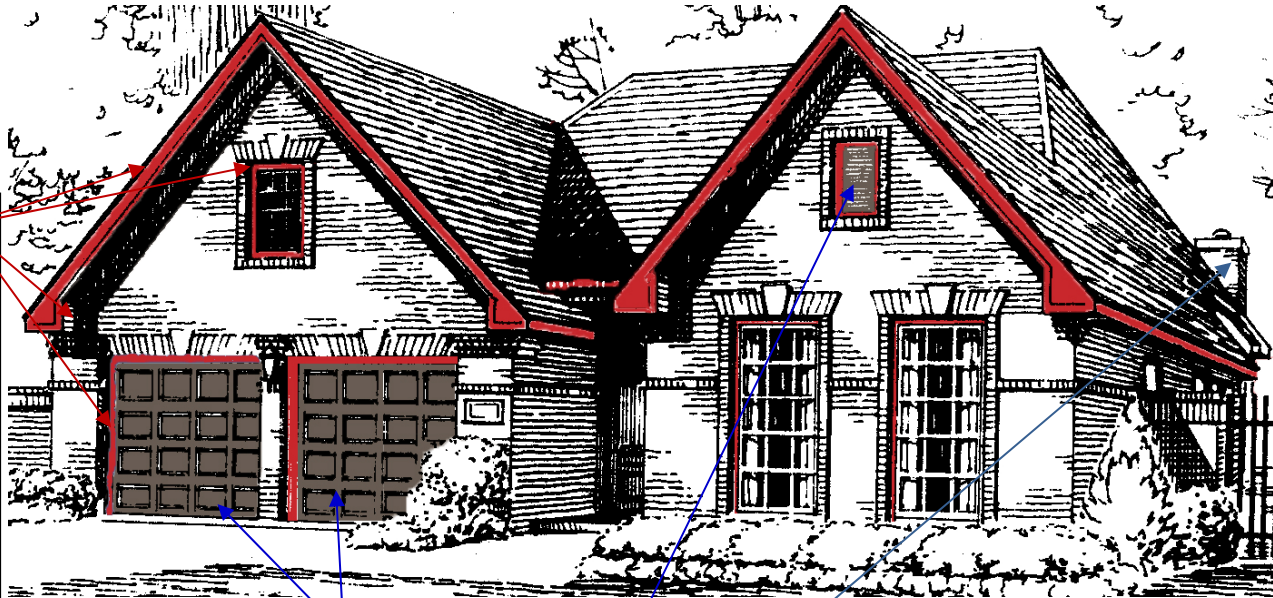


Kings Crossing XIV Color Guidelines for Painting

RED represents areas that should be painted **Silver Mushroom-TRIM**

BROWN represents areas that should be painted **Casino Tan-Garage Doors & Shutters**

**Any questions or clarifications should be submitted to the Kings Crossing XIV Home Owners Association*



TRIM=Fascia, Soffit,
Garage Door Trim, Wooden
Window trim, Wooden Trim
around Shutters.

RED = Silver Mushroom

SHERWIN-WILLIAMS 07/11/08
Sher-Color(tm) Order# 7220-0033050

EXTERIOR ARCHITECTURAL
SUPER PAINT LATEX
SATIN IFC 411X

ENCLAVE SILVER MUSHROOM
CUSTOM MANUAL MATCH

BAC COLORANT	02	32	64	128
B1-Black	-	17	-	-
R2-Maroon	-	4	1	1
Y3-Deep Gold	-	22	1	-
N1-Raw Umber	-	6	-	-

ONE GALLON EXTRA WHITE
A89W0051 640514873

Non Returnable Tinted Color

CAUTION: To ensure consistent color, always order enough paint to complete the job and intermix all containers of the same color before application. Mixed colors may vary slightly from color strip or color chip.



0033050-001

GARAGE DOORS and SHUTTERS and Chimneys

BROWN = Casino Tan

SHERWIN-WILLIAMS 07/11/08
Sher-Color(tm) Order# 7220-0105867

EXTERIOR ARCHITECTURAL
SUPER PAINT LATEX
SATIN IFC 411X

ENCLAVE CASINO TAN
CUSTOM MANUAL MATCH

BAC COLORANT	02	32	64	128
W1-White	-	22	1	1
B1-Black	-	39	1	1
R2-Maroon	-	8	1	-
Y3-Deep Gold	-	42	1	1

ONE GALLON DEEP
A89W00153 640392346

Non Returnable Tinted Color

CAUTION: To assure consistent color, always order enough paint to complete the job and intermix all containers of the same color before application. Mixed colors may vary slightly from color strip or color chip.

